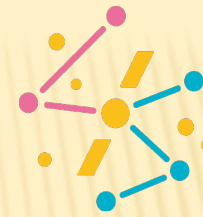


2026 LEARNING SATELLITE IN GADJAH MADA UNIVERSITY YOGYAKARTA IN INDONESIA



Hokkaido University
Learning
Satellite



Gadjah Mada Univ.



Code River in Yogyakarta



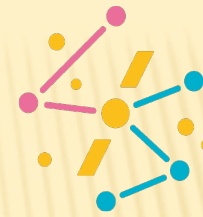
Borobudur Temple



Candi Prambanan

Current situation and countermeasures of
environmental pollution in the tropical area

2026 LEARNING SATELLITE IN GADJAH MADA UNIVERSITY YOGYAKARTA IN INDONESIA



Hokkaido University
Learning
Satellite

Current situation and countermeasures of environmental pollution in the tropical area

Schedule October 12-17
 Arrival by October 11
 Departure on October 18
Pre-lecture at 2 pm on September 29
Report submission after the trip



Lecture titles

Basics of absorbents

Environmental remediation using advanced porous materials

Water purification by catalysis

Tracking PFAS in Water Bodies: From Occurrence to Mitigation

Environmental problems in freshwater system

Water analysis

Environmental issues in Indonesia

Local environmental issues including Code river and the industrial area



FIELD SURVEYS AND ANALYSIS



Chromium Detection



STUDENT PRESENTATION



Participation cost (tentative)

Participation fee ¥20,000 (Lunch, transportation, analysis cost)

Air tickets ¥80,000-¥120,000-¥200,000

(We'll meet at the destination, but please coordinate with each other to take the same flight if possible.)

Hotel including breakfast ¥25,000

Dinner ¥10,000

VISA fee ¥20,000

Travel insurance ¥5,000

Total ¥180,000

Travel Expense Subsidy ¥50,000 (only 7 students)

Application

One page essay to explain your reasons for applying (in English)

A copy of your passport

A name of your supervisor and his or her e-mail address

(Permission from your supervisor is needed)

Apply to okino@ees.hokudai.ac.jp

Deadline : June 15th

Interviews will be held from mid- to late June to select participants.

Two credits of “Global Environmental Research I”
will be given after completing the program.